





I would like to support EPC

Donate online www.epc.asn.au

 www.epc.asn.au & click Donate  or **Donate on Facebook**

 Call on **1300 130 813**

 Complete form and

-  **Mail** EPC, PO Box 2110, Rangeview, 3132
-  **E-mail** epccip@epc.asn.au
-  **SMS** a photo of the completed form to 0404 912 875

I would like to make a tax deductible donation of

\$ _____ (please nominate)
 One-time gift Monthly recurring gift
 My donation is in honour of _____

Name _____
Address _____
Suburb _____ State _____ Postcode _____
Phone _____
Email _____

Method of payment

Visa Mastercard Amex Cheque or Money Order
Payable to Eastern Palliative Care Association Inc.

Card Number

Expiry date

Cardholders name _____
Signature _____

Please e-mail me your quarterly newsletter, event invitations and updates.*
 Please e-mail me information about including EPC in my Will.

* All information is collected in accordance with EPC's Privacy Policy (no spam). If you would like further information about EPC fundraising activities or to read our Privacy Policy, please visit our website (www.epc.asn.au).

Area of Service Provision

EPC provides services from locally-based care teams.

EPC serves the following Local Government areas:

-  Boroondara
-  Knox
-  Manningham
-  Maroondah
-  Monash
-  Whitehorse
-  Yarra Ranges

The majority of our funding comes from Government sources. EPC also relies on community fundraising and donations to maintain the services and programs we provide to clients, caregivers and families.

These services are offered free-of-charge.*



* Some exceptions apply.

Compassion, Dignity, Excellence, Empowerment.

Child Safety

EPC takes child safety seriously.

The palliative care services provided to children are delivered to the same high standards as all other clients. EPC has additional measures in place to ensure a child-safe culture is embedded and practiced within the organisation. All staff have a current Police Check and all clinical staff have a Working with Children Check.



Palliative care. Living well every day.

epc.asn.au  1300 130 813

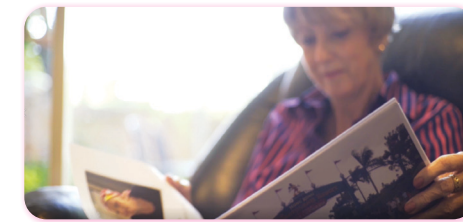


EPC is a partnership between the Order of Malta, Outer East Palliative Care Service Inc. and St Vincent's Hospital (Melbourne) Ltd.

EPC acknowledges the support of the Victorian Government.



About Us



Palliative care. Living well every day.

epc.asn.au  1300 130 813

What is Palliative Care?

Palliative care recognises the special needs of a person who has a terminal or life-limiting illness.

The focus of care is on improving the quality of life of clients by assisting with their symptoms and helping them to make changes that will make their lives easier and more comfortable.

Palliative care aims to make the client feel in control of their treatment options and offers support for their carer, family and friends. It involves trained professionals providing various types of care which may include specialist palliative care doctors, nurses, family support workers, bereavement support workers, music, massage, and occupational therapists. The delivery of care is often supported by specially trained volunteers.

Palliative care is provided in the person's own home, including residential aged and disability care facilities, depending on where the person is living and where they choose to have their care provided at the end of life. Palliative care complements the range of medical treatments and services currently available.

About Eastern Palliative Care (EPC)

Eastern Palliative Care (EPC) is a not-for-profit home-based palliative care service which offers a full range of support programs with the aim of improving the quality of life of individuals, those providing care and families of those suffering terminal or life-limiting illnesses.

Our Purpose

We exist so that: our clients live with the best quality of life, before dying in their place of choice. Clients, their families, and carers are supported according to their needs and choices.

Our Roles

To people with a progressive, life-limiting condition, we provide a holistic, person-centred, specialist palliative care service which:

- Comprises nursing, medical, allied health and bereavement support
- Is delivered in the place a person considers home
- Provides support 24 hours a day, 7 days a week
- Normalises the process of dying for our community
- Neither hastens nor postpones death
- Ensures the right people have access to our services at the right time

Our Values



Compassion

Empathy for others in their end of life experience by listening, accepting, and actively responding to their needs.



Dignity

Upholding the unique personality, situation and choices of people, valuing their lives in the face of death, and respecting their rights.



Excellence

Delivering evidence based quality care, underpinned by ethical practice, research and leadership.



Empowerment

Building trust with people, that puts them at the centre of decision-making and enables control and choices.

The EPC Team



Referrals

Clients are referred by treating doctors, hospitals, specialists, allied health professionals, by themselves or by family members and friends.

Referrals can be made online at epc.asn.au or via your **Healthcare Professional**.

How your support can make a difference

Your generous support helps maintain the free* delivery of our services and programs to clients, carers, families and the community including the following:

- Specialist Palliative Care Nurse and Family Support Worker visits in your home, including aged and disability care facilities, throughout Melbourne's Eastern Metropolitan Region
- 24-hour nursing support
- Liaison with your GP and medical consultants
- Carer education and support
- Massage Therapy
- Music Therapy
- Occupational Therapy
- Bereavement counselling and support
- Bereavement Support Groups
- Specialist palliative care training for other health professionals
- Palliative care education for the community
- Training for our volunteers
- Volunteer support in your home
- Volunteer transport services
- Client biography service
- Palliative Paws program – caring for your pets
- Specialised equipment assessment and hire

*All of our services are provided free-of-charge, aside from equipment delivery and some of our professional training.

