

Learn More

Infection Prevention and Control is **everyone's** business!

Please speak up and ask for more information about your care.



Palliative care. Living well every day.

🌐 epcvic.org.au ☎ 1300 130 813

Donate online www.epcvic.org.au

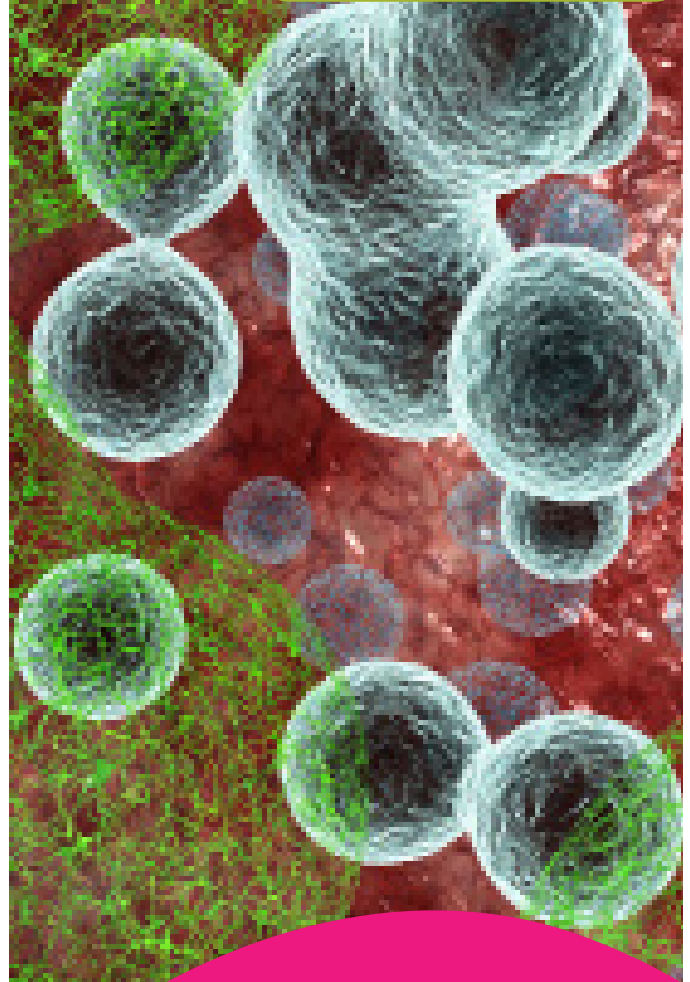


Eastern Palliative Care Ltd acknowledges the support of the Victorian Government.



Copyright © 2025 Eastern Palliative Care [07/25]

Infection Prevention and You



Palliative care. Living well every day.

🌐 epcvic.org.au ☎ 1300 130 813

What are healthcare associated infections?

A healthcare-associated infection (HAI) is an infection that can occur as a result of the care or treatment that you receive.

The most common types of HAIs are as follows.

- Urinary Tract Infections (from catheters)
- Catheter Associated Blood Infections
- Gastrointestinal infections (eg: gastro)
- Wound or skin infections.

How do EPC staff prevent infection in the home?

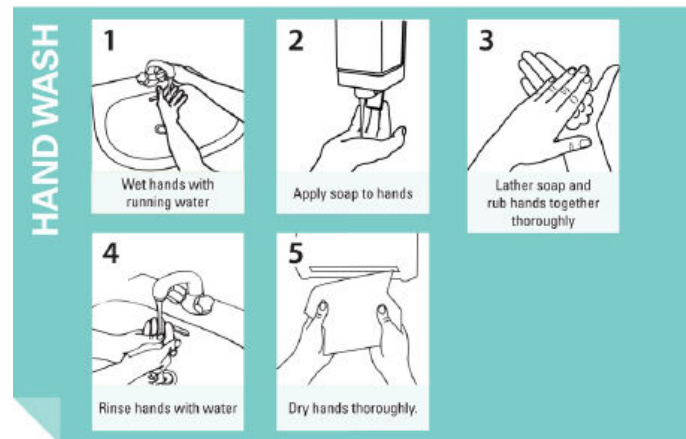
EPC staff use proven methods to help you stay safe from infections and viruses. These include the following:

- Regular hand washing
- Regular use of alcohol-based gel hand rub
- Disinfectant wipes to clean equipment
- Wearing gloves, goggles and/or gowns and masks as appropriate
- Using disposable medical items and disposing of them properly
- Using sharps safely and disposing of them properly
- Talking to you about how to prevent infections
- Not coming to work when unwell.

What can you do to prevent infections?

You can also play an important role in preventing infection.

- Wash your hands regularly especially after going to the toilet or before preparing food.
- Wash your hands before touching a dressing or urinary catheter.
- Wear gloves.
- Cover cuts & grazes with a waterproof dressing.
- If the area around a dressing becomes wet or feels uncomfortable, ask EPC staff what to do.
- If the area around a dressing, PICC line, etc. becomes painful, red, hot or itchy, let EPC staff know.



Washing your hands properly is the single most important thing you can do to prevent infection!